



**MUNICIPAL DISTRICT OF SPIRIT RIVER NO. 133
IN THE PROVINCE OF ALBERTA**

BYLAW #01-AM-17

**BEING A BYLAW TO AMEND BYLAW 03-2009 THE LAND USE BYLAW OF THE
MUNICIPAL DISTRICT OF SPIRIT RIVER #133**

WHEREAS the Council of the Municipal District of Spirit River #133, in the Province of Alberta has adopted a Land Use Bylaw; and

WHEREAS the Council has the authority under the provisions of the Municipal Government Act, R.S.A. 2000, Chapter M-26 with amendments thereto, to make amendments to its Land Use Bylaw; and

WHEREAS the Council of the Municipal District of Spirit River #133 deems it desirable to amend the Land Use Bylaw No. 03-2009; now

THEREFORE the Council of the Municipal District of Spirit River #133, duly assembled, **HEREBY ENACTS AS FOLLOWS:**

1. That the land use district classification for the **South West Twenty-six (26) Township Seventy Eight (78), Range Six (6) West of the Sixth Meridian (W6M)** be amended from **Agriculture Restricted (AR)** to **Rural Industrial (RI) District** as illustrated on Schedule "A" attached hereto.
2. That this bylaw shall come into force and take effect upon the Third and Final Reading thereof

Read for a First time this 1st day of February, A.D., 2017.

Read for a Second time this 9th day of June A.D., 2017.

Read for a Third and Final time this 9th day of June A.D., 2017.

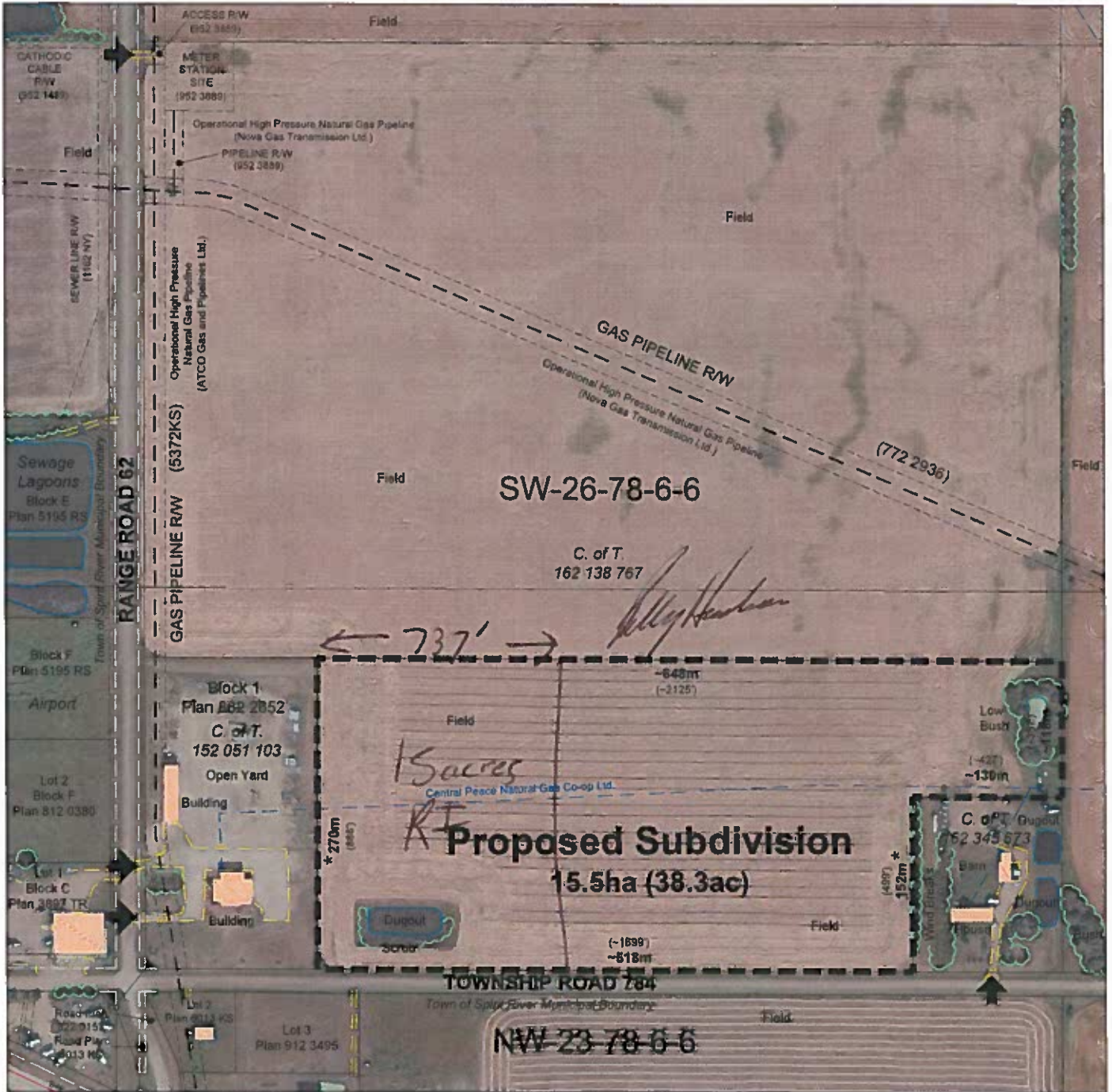


Chief Elected Official



Chief Administrative Officer

Schedule "A"



Rezoning 01-AM-17
PROPOSED PLAN OF SUBDIVISION
 MUNICIPAL DISTRICT OF SPIRIT RIVER No. 133
 LEGAL: SW Sec. 26, Twp. 78, Rg. 6, W6M

FILE No. 01-SD-17

SCALE 1 : 5,000

*third Reading
June 9th 2018*

NOTE : Dimensions marked with asterisk * indicate distance from title or registered plan otherwise distances and area calculations are approximate (±)

LEGEND

- Subject Lands
- Building
- Access Road
- High Pressure Pipeline
- Natural Gas Servicing
- Existing Approach



J:\13100\13110_md_spiritriver_planning\02_cadd\20_drafting\203_subdivisions\2017\01-sd-17\leley\01-sd-17\leley_sketch.dwg