



**MUNICIPAL DISTRICT OF SPIRIT RIVER NO. 133
IN THE PROVINCE OF ALBERTA**

BYLAW #02-AM-15

**BEING A BYLAW TO AMEND BYLAW 03-2009 THE LAND USE BYLAW OF THE
MUNICIPAL DISTRICT OF SPIRIT RIVER #133**

WHEREAS the Council of the Municipal District of Spirit River #133, in the Province of Alberta has adopted A Land Use Bylaw 03-2009, and

WHEREAS the Council has the authority under the provisions of the Municipal Government Act, R.S.A. 2000, Chapter M-26 Revisions and Consolidation of Bylaws, Revision authorized, Section 63-2(h) with amendments thereto, to make amendments to its Land Use Bylaw,

WHEREAS the Council of the Municipal District of Spirit River #133 deems it desirable to amend the Land Use Bylaw No. 03-2009; now

THEREFORE the Council of the Municipal District of Spirit River #133, duly assembled, **HEREBY ENACTS AS FOLLOWS:**

1. **THAT** the land use district classification for the **Northeast ten (10) Township Seventy-nine (79) Range Five (5) West of the Sixth Meridian (W6M)** be amended from **Agriculture (A)** to **Country Residential 1(CR1) District** as illustrated on Schedule "A" attached hereto.
2. **THAT** this bylaw shall come into force and take effect upon the Third and Final Reading thereof

READ A FIRST TIME this 19th day of August, A.D., 2015

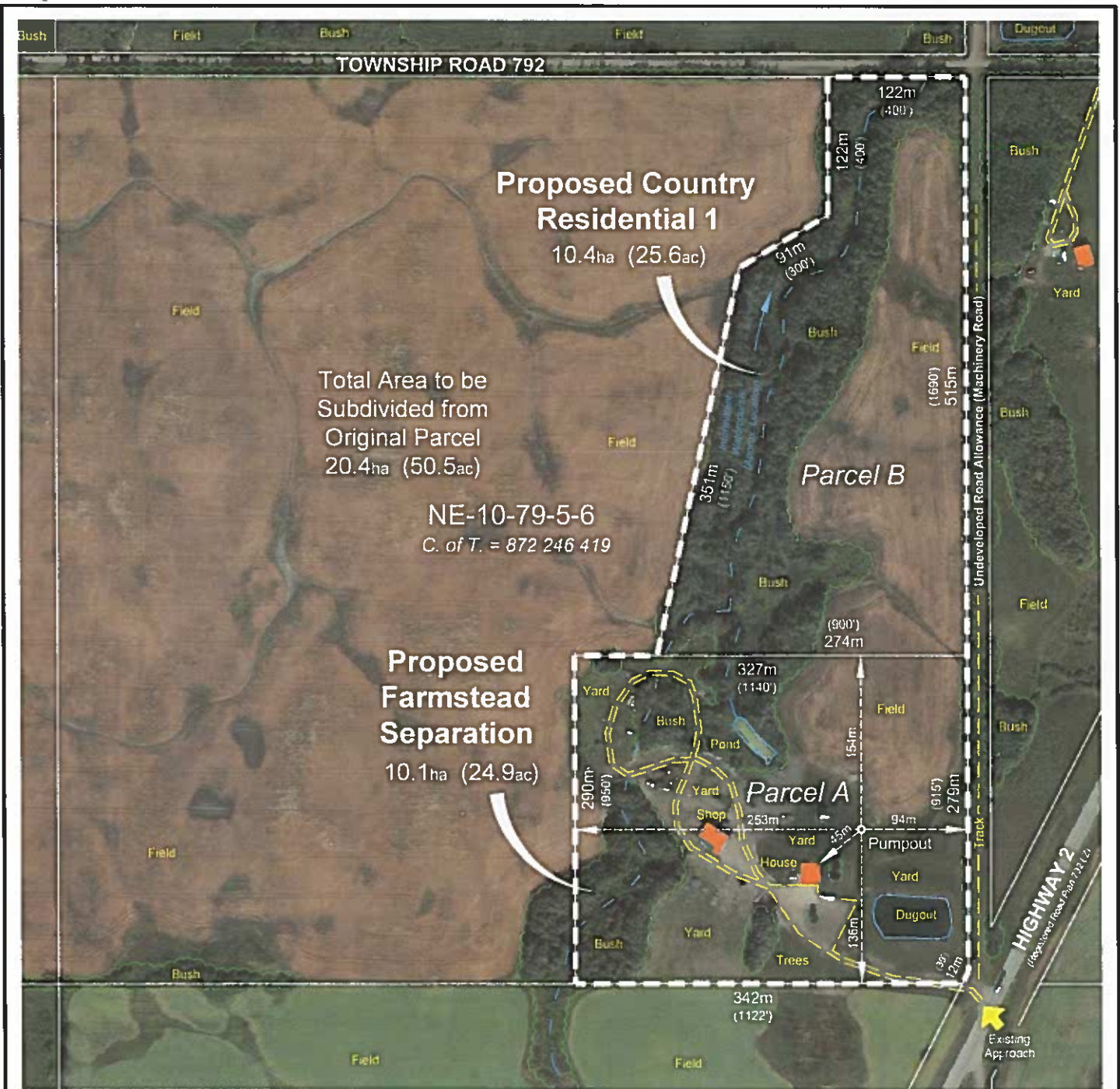
READ A SECOND TIME this 7th day of Oct, A.D., 2015

READ FOR A THIRD AND FINAL TIME this 7th day of Oct, A.D., 2015

SIGNED by the REEVE and the CHIEF ADMINISTRATIVE OFFICER this
day of , 2015


Reeve Stanley Bzowy


CAO Kelly Hudson



PROPOSED PLAN OF SUBDIVISION
MUNICIPAL DISTRICT OF SPIRIT RIVER No. 133

LEGAL: NE Sec. 10, Twp. 79, Rg. 5, W6M

FILE No. 09-SD-15

SCALE 1 : 5,000

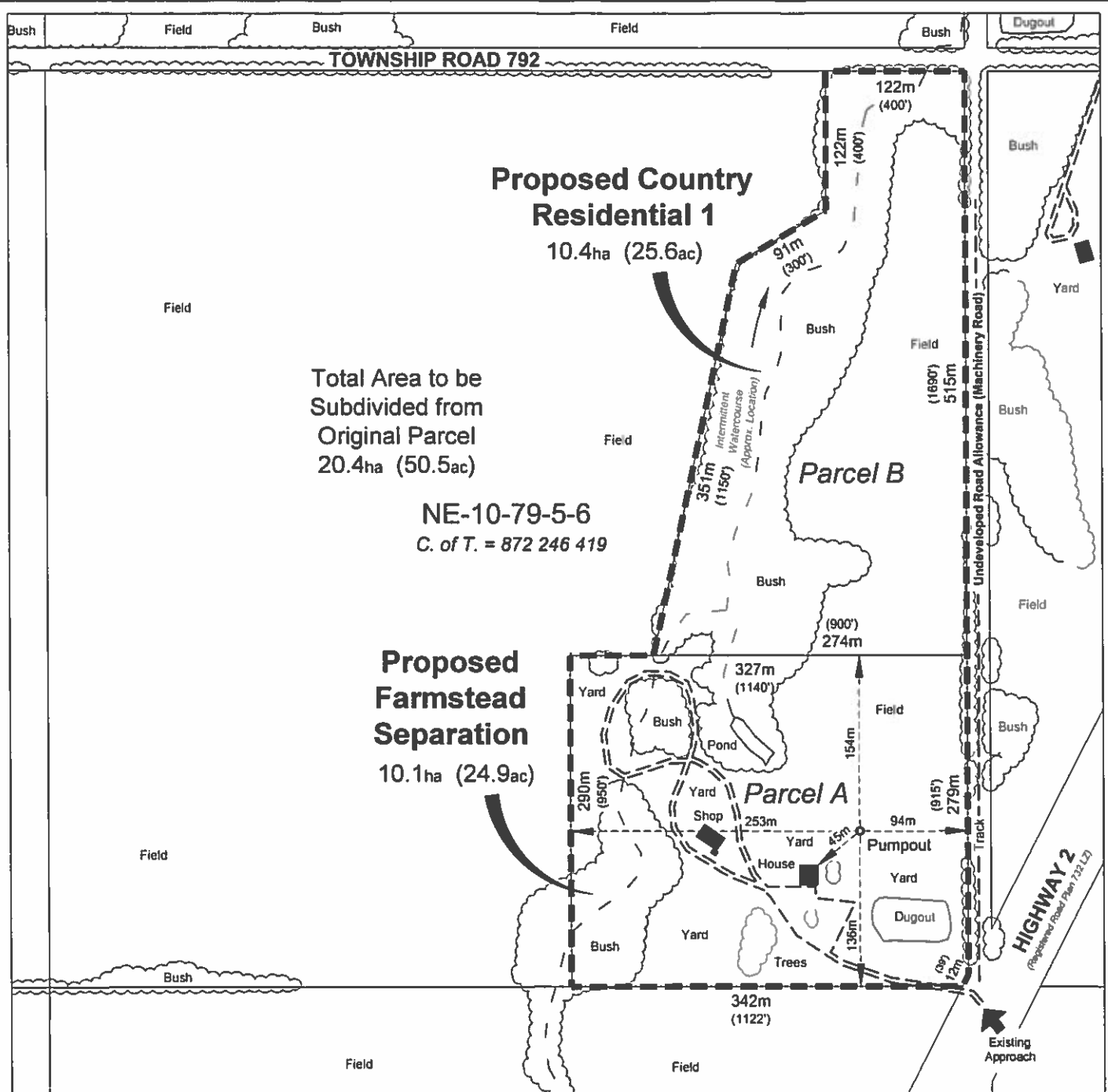
Legend

 **Building**



NOTE : Distances and area calculations are approximate (±)
Improvements located as per data supplied by owner.

August 12, 2015



**PROPOSED PLAN OF SUBDIVISION
MUNICIPAL DISTRICT OF SPIRIT RIVER No. 133**

LEGAL: NE Sec. 10, Twp. 79, Rg. 5, W6M

FILE No. 09-SD-15

SCALE 1 : 5,000

Legend

■ Building

NOTE : Distances and area calculations are approximate (±)
Improvements located as per data supplied by owner.



August 12, 2015